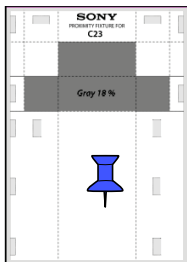
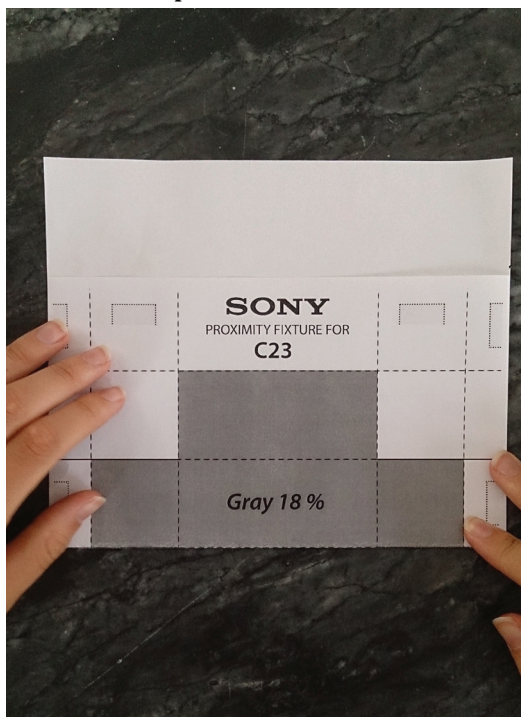
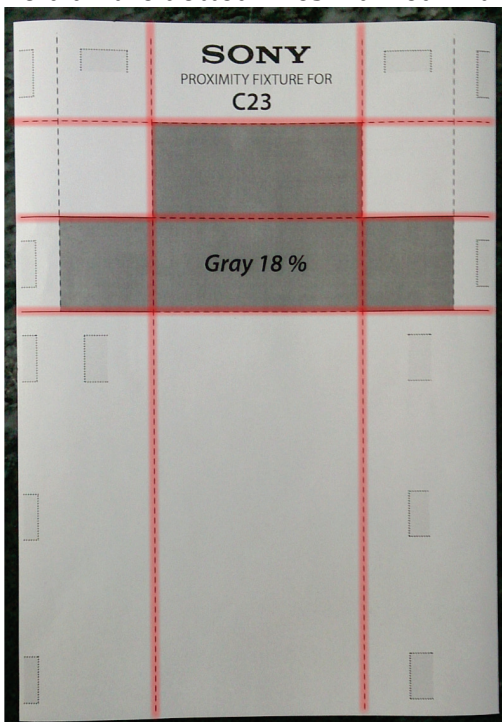


Build Proximity Fixture for C23 rev1

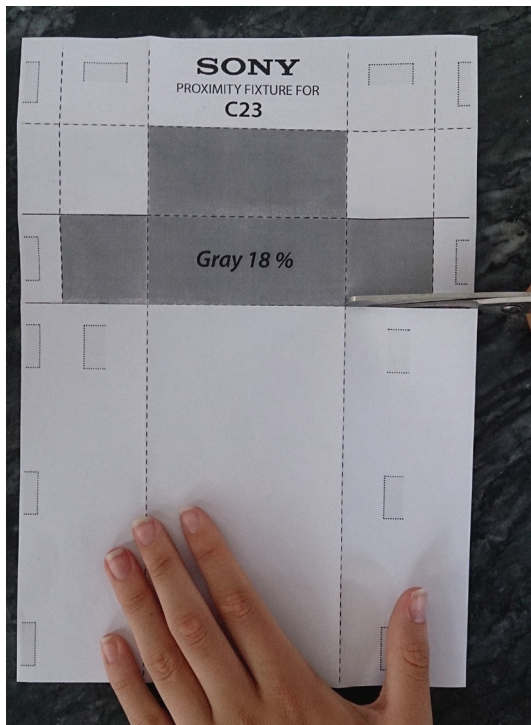
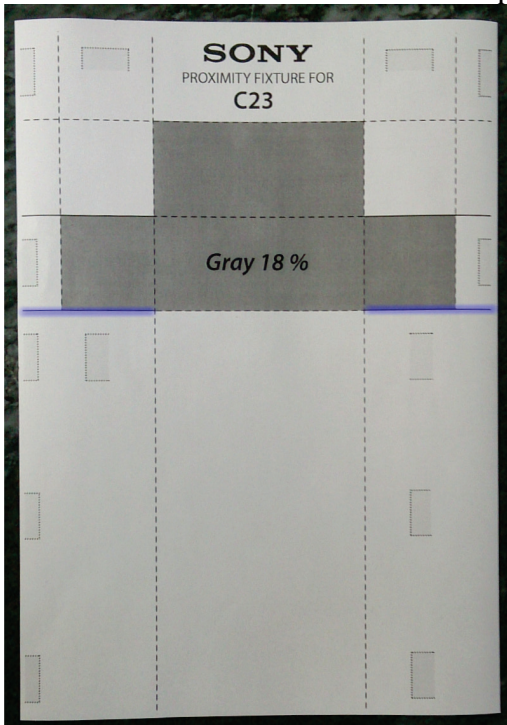


*Print out the attached PDF-file "Proximity Fixture for C23" in **Actual size**.*

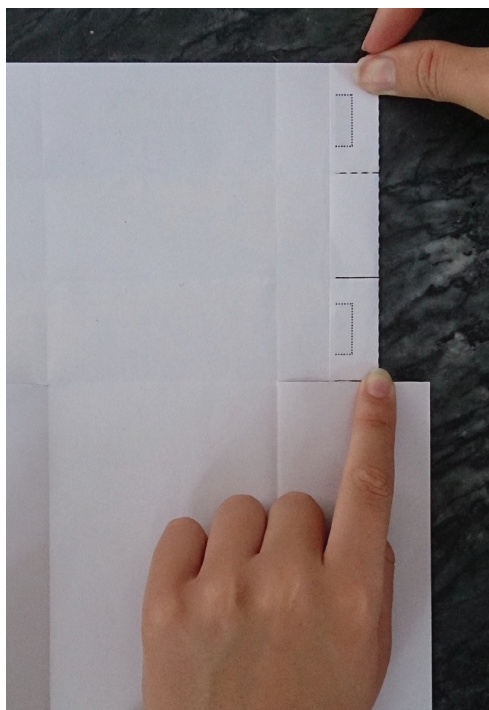
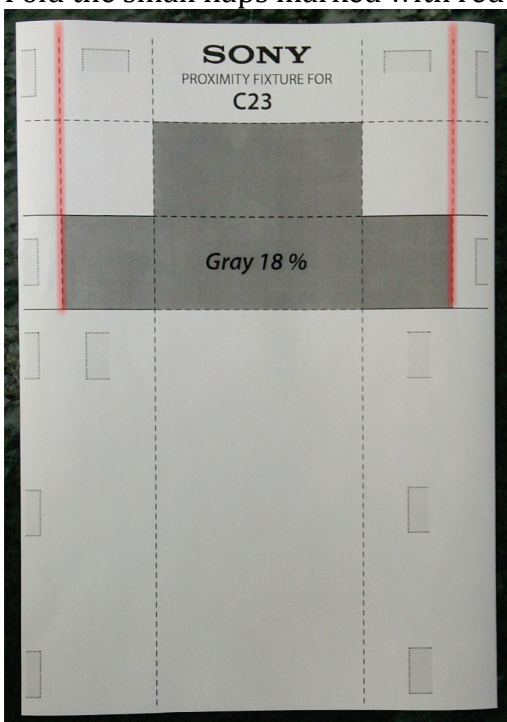
Fold all the dotted lines marked with red in the left picture:



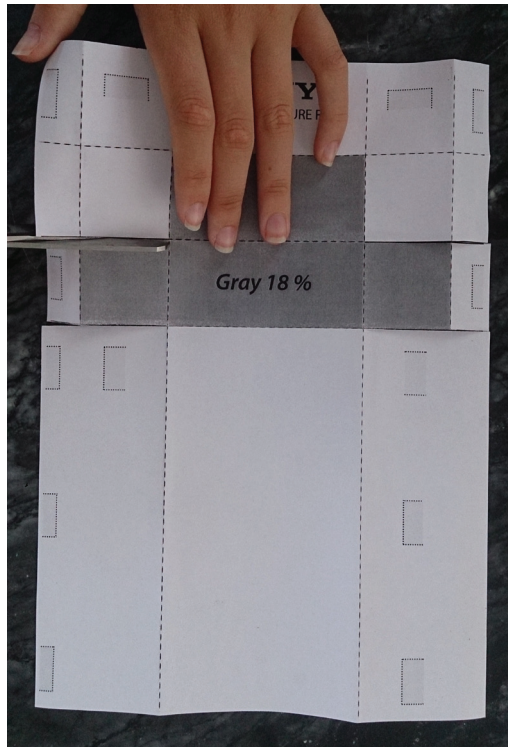
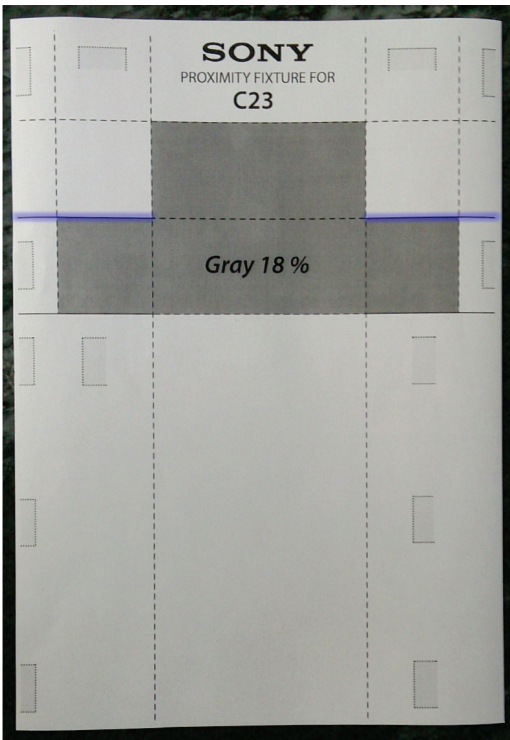
Cut the blue lines marked in the left picture:



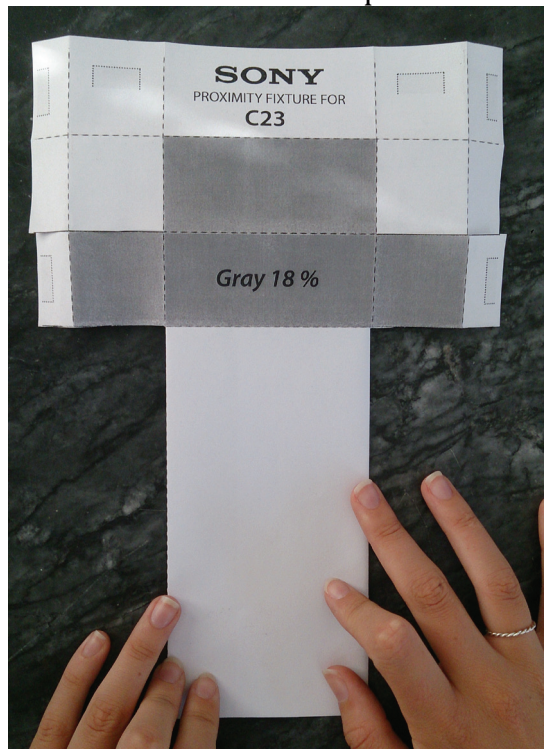
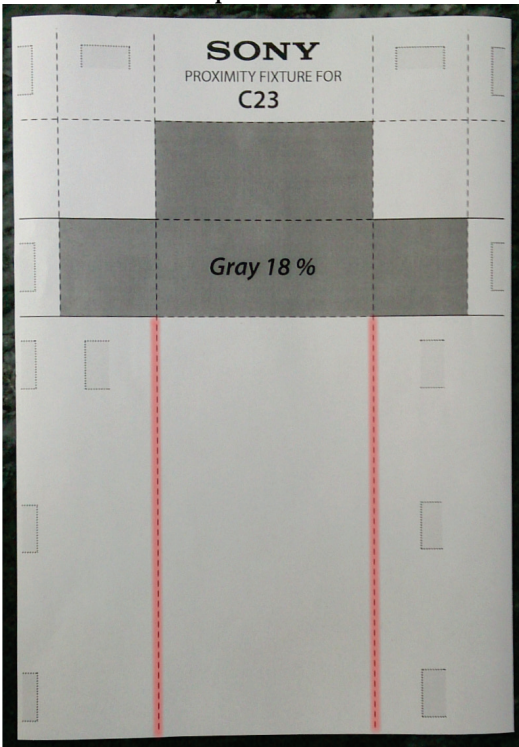
Fold the small flaps marked with red in the left picture:



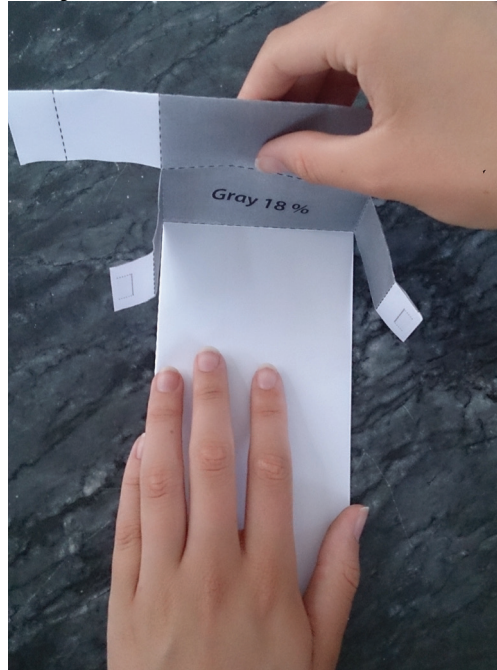
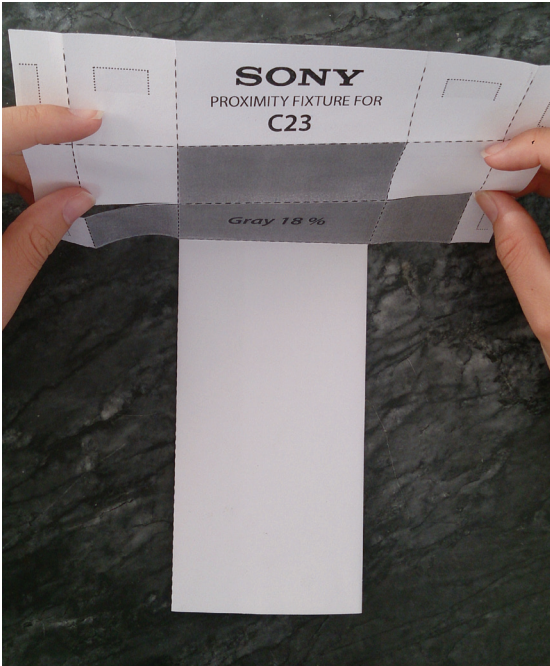
Cut the blue lines marked in the left picture:



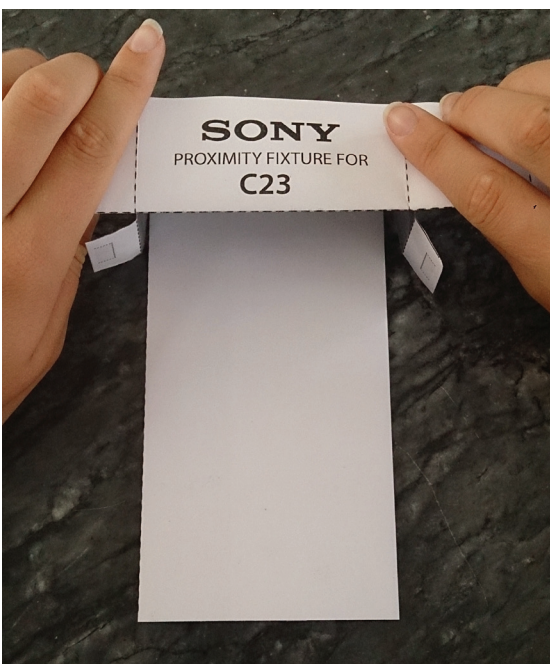
Fold the two flaps beneath the bottom, marked with red in the left picture. First right then left.



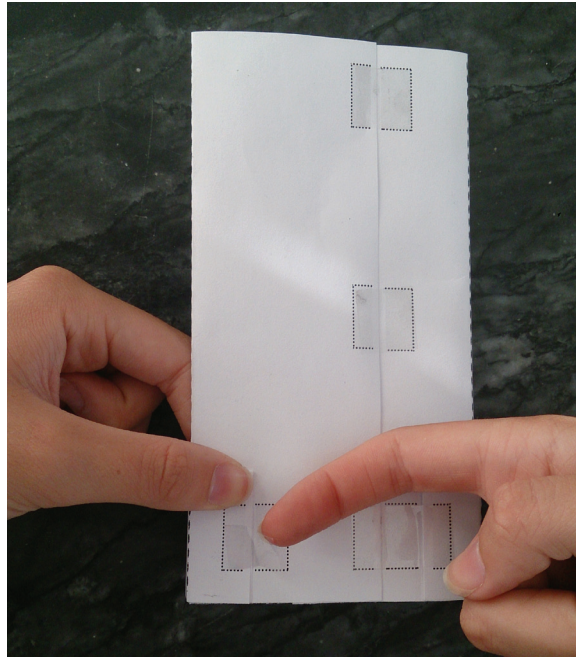
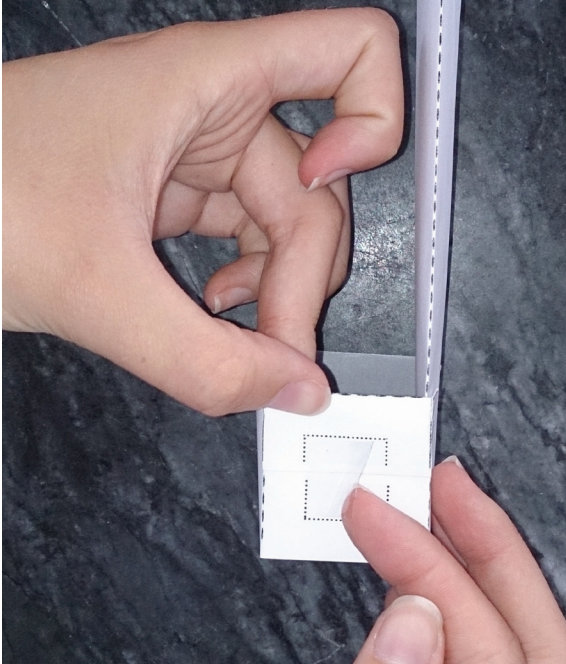
Fold the top part backward, and then the next part forward as a roof.



Fold the sideflaps beneath the bottom:



Tape alle the gray marked area, at the back and the sides:



The fixture is now ready for use:

